



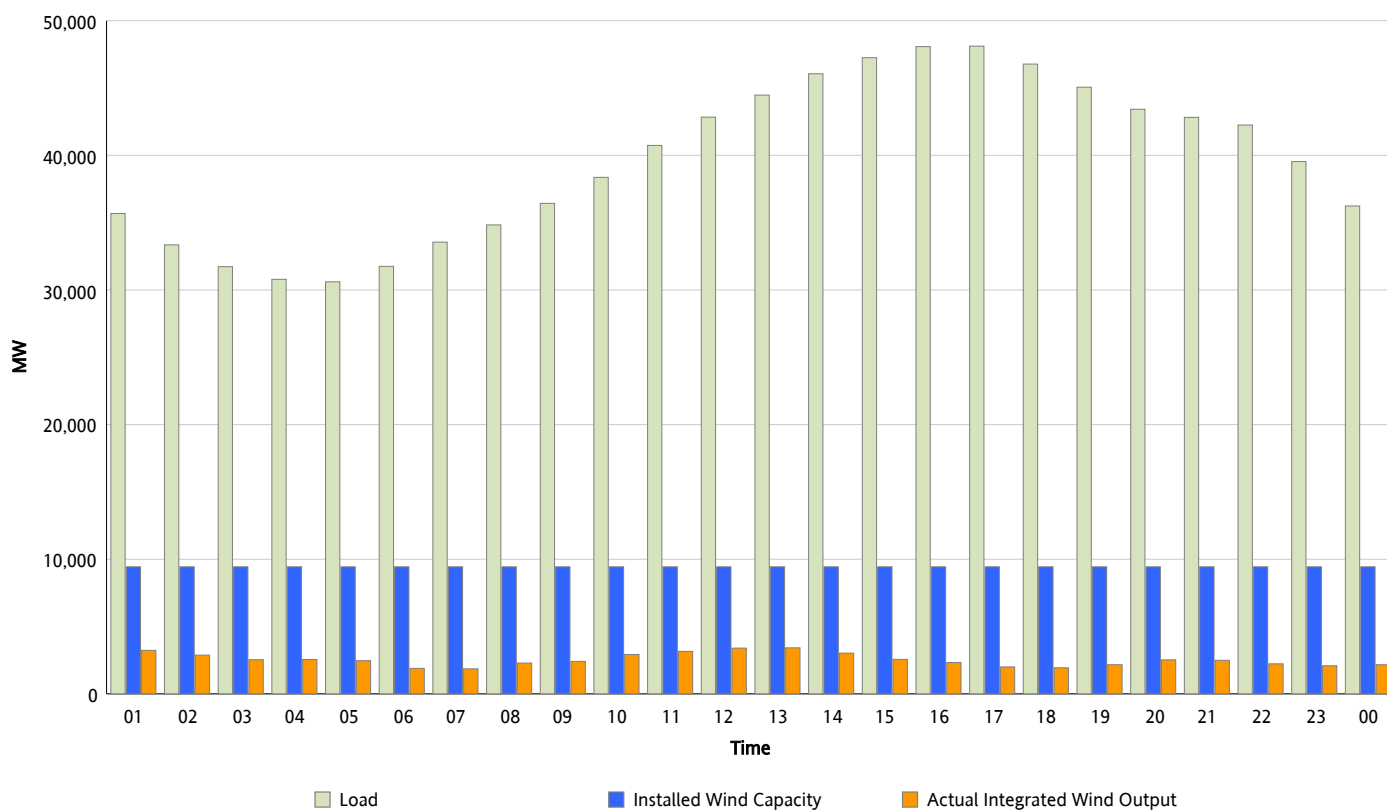
ERCOT Grid Operations

Wind Integration Report : 06/07/2012

Peak Load	48,112 MW
Load Peak Hour (HE)	17
Wind Over Peak	2,001 MW
Wind Record 04/13/12	7,925 MW
Max Wind Value*	3,507 MW
Wind Peak Time	12:26
Wind Integration %	7.91 %

Hourly Average Actual Load vs. Actual Wind Output

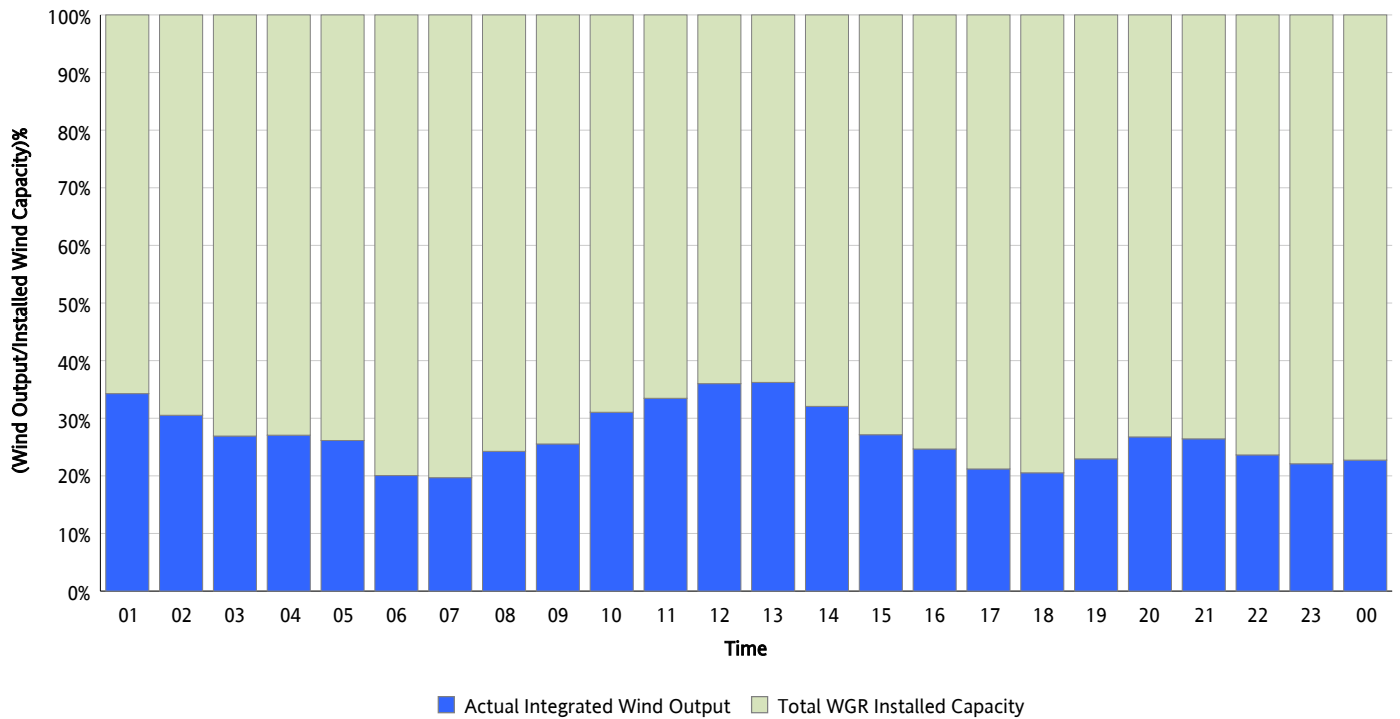
06/07/2012



* Wind Record and Wind Max represent instantaneous values and the rest of the values are integrated over the hour

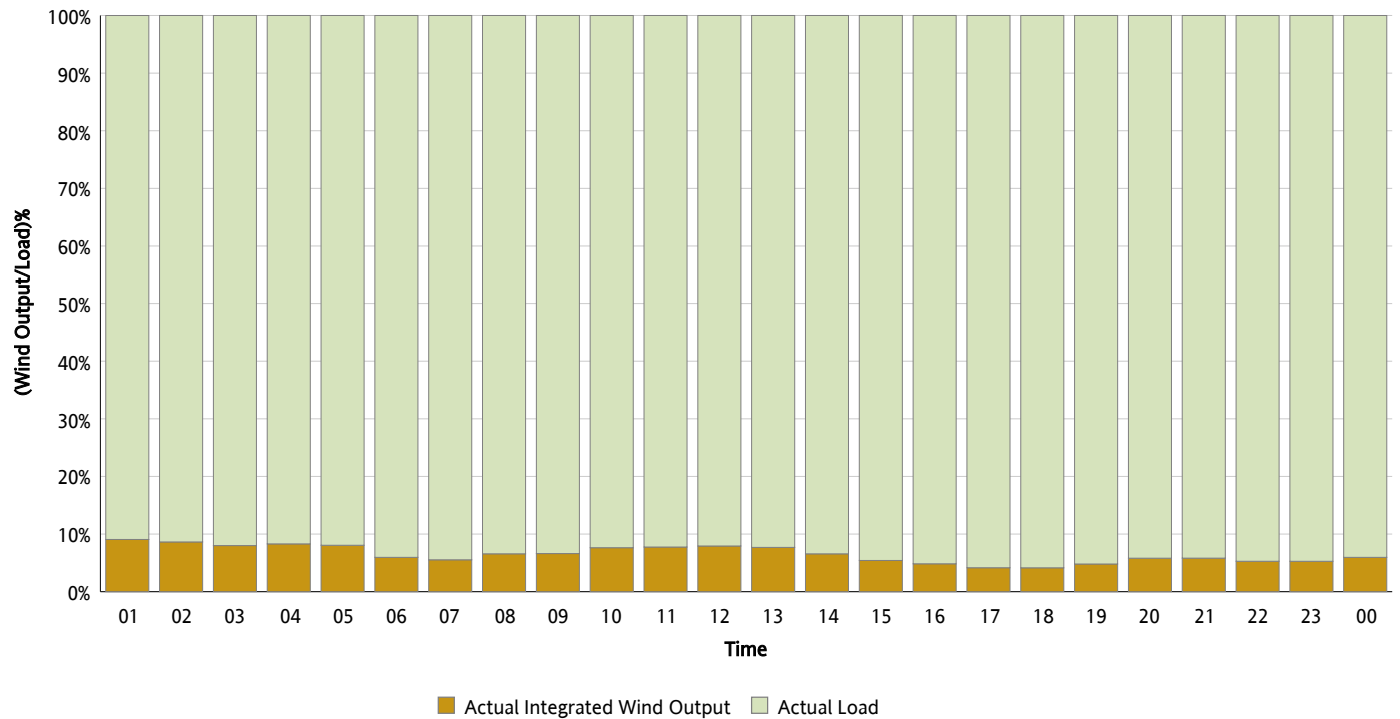
Actual Wind Output as a Percentage of the Total Installed Wind Capacity

06/07/2012



Actual Wind Output as a Percentage of the ERCOT Load

06/07/2012



ERCOT Load vs. Actual Wind Output

05/31/2012 - 06/07/2012

